

2020 Capability Statement



- DARWIN
- CAIRNS
- BRISBANE
- GOLD COAST
- NEW CASTLE
- SYDNEY
- CANBERRA
- MELBOURNE
- HOBART
- ADELAIDE
- PERTH
- BROOME
- AUCKLAND
- CHRISTCHURCH

Fitout

| Joinery

| Maintenance



Welcome to PQ



As experienced, multi award-winning interior fit-out professionals Projects Queensland (PQ) have been at the forefront of fit-outs in both commercial and residential spaces for over the last thirty years. Since establishment, our teams of project managers, highly skilled tradespersons and supporting allied trades have completed over 360 projects around Australia New Zealand and South East Asia equating to a footprint of more than 40,000 m2.

From the highest level of Retail to contemporary homes through to universities, schools, retail developments, cultural areas, vehicle dealerships, office, and other commercial spaces our range of expertise in Project Management, Joinery and Cabinet Making is unsurpassed. Our thirty-year history is the testament to our experience in our field and is an assurance for you that your project will be completed to the highest specification and detail, on time and on budget.

Since 1989 PQ have produced outstanding bespoke outcomes for our clients, and for the designers and architects our clients have employed. The multiple-site projects we have completed are testament to the long-term relationship and trust we develop with our clients from the initial contract negotiations through to project handover and then finally to the on-going maintenance of the finished project allowing the best return on our client's investments.

Three business units form the nucleus of our business – PQ Fitouts, PQ Joinery and PQ Maintenance



Our team and Organizational Structure



Brad Dunne
Managing Director



Craig Stewart
General Manager



Sandra Lysaght
Financial Manager



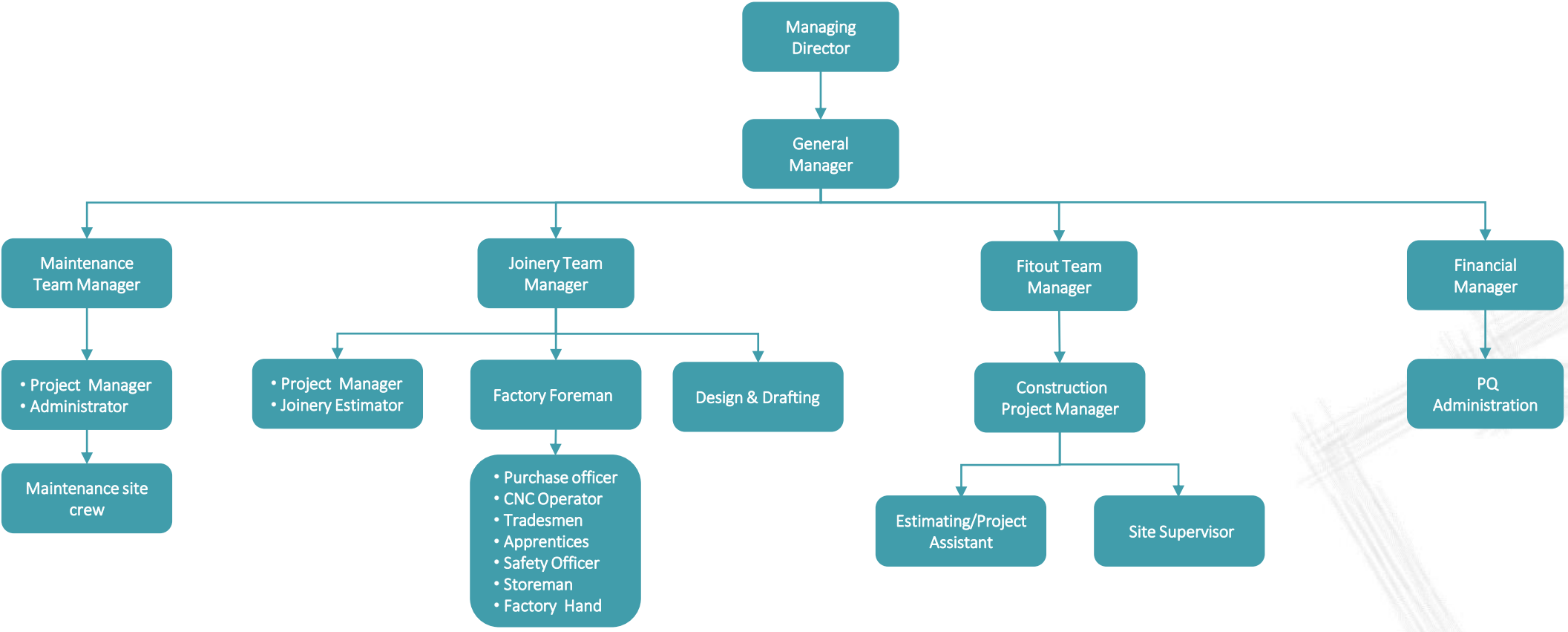
Josh Turner
Fitout Team Manager



Nathan Meers
Joinery Team Manager



Jim Walker
Maintenance Team Manager



Our Core Pillars

At PQ we believe in and work every day with belief and commitment to these 6 core pillars. We strive to be the best we can and to have open awareness to change, be adaptable and to grow.



Transparency

From the MD to the junior apprentice, our business thrives on open and honest communication. To be accountable to each other as a team means we need to speak our mind and do so with respect and thoughtfulness.



Influence

We are influenced by our clients, our staff, our suppliers and subcontractors, regulatory authorities, the community and the environment. The combination of these influences impacts on us daily and contributes to our strengths.



Collaboration

We play as a team, solve problems as a team and celebrate success as a team. The spirit of cooperation and interaction is what makes it all happen!



Our Purpose

Our aim is to provide exceptional value through our goods and services. Our purpose is to build a brand, continue its development for generations to follow and enable its employees to succeed on the journey.



Values

Placing high value on integrity and honesty is not a cliché it is an essential – Respect is shown to everyone not just those we wish to impress.



Heart

It is the lifeblood that ensures we action what we say with passion and conviction to deliver what we promise. For four decades we have learned from our mistakes as much as our successes.

Licences & Awards

At PQ we believe in a simple philosophy "honesty and integrity in all our dealings". We are licenced across all states and belong to several industry affiliations. Our team is made up of many long-standing tradespeople and in every instance the outcome of a project is the driving factor and we are proud of our achievements.

- 2018/2019 - Interior Fitout Over \$1 Million
- 2018/2019 - Queensland Interior Fitout of the Year
- 2018/2019 - Interior Fitout \$750 to \$1 Million
- 2017/18 - Best interior fit out over \$1 Million
- 2017/18 – National interior fit out of the year
- 2015/16 - National interior fit out of the year
- 2015/16 - Queensland interior fit out of the year
- 2016 - Gold Coast Business Excellence award (finalist)
- 2014/15 - Best interior fit out over \$1 Million
- 2014/15 - Queensland interior fit out of the year
- 2014/15 - Queensland interior fit out of the year (Commercial)
- 2014/15 – Best use of the sponsors product (Laminex)
- 2014 - Gold Coast Business Excellence award (finalist)
- 2005/06 - Queensland interior fit out of the year

[Click here to view our recent awards](#)

Australian Business Number:

ABN No: 38 069 530 347

ACN No: 069 530 347

Queensland Building and Construction Commission

Contractor's Licence No. 77531

Supervisor Licence shopfitting No. 76266

Supervisor Licence cabinetmaking No. 1135947

Building Practitioners Board Victoria

Commercial Builder –No. CB-L 56291

Building Practitioners Board Western Australia

Company Licence BC103090

Contractor Reg no. 100583

Practitioner Reg no. 100724

ACT Construction Occupations Licence

Contractor's Licence No: 2017108

ASOFIA

Registration Number: 4585

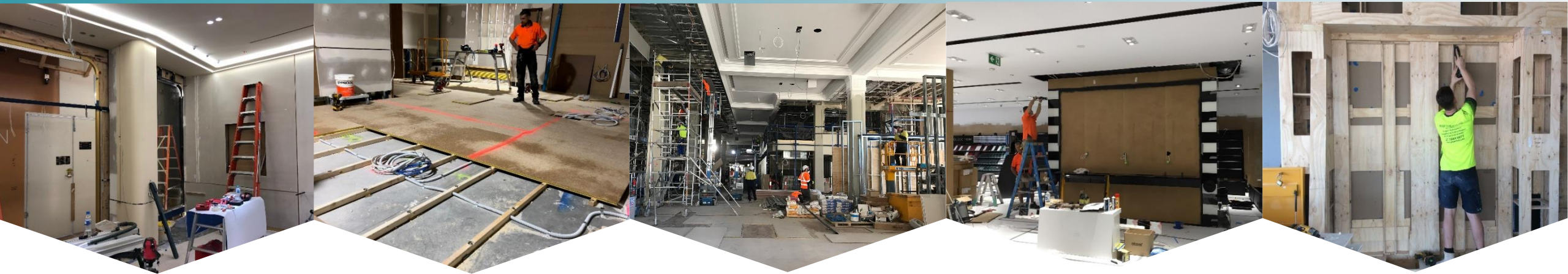
Master Builders Association (MBA)

Registration Number: 00715

HIA Member

Registration Number: 1163499





Project management:

We undertake all facets of project management co-ordination, cost management, on and off-site construction supervision, program development and management, statutory body applications, permits and certification, site management including Workplace Health and Safety plan implementation and management, project completion and client handover.

Our 'Quality Management System' ensures a premium and high-quality work delivery on every project we conduct. We specialise in turnkey projects undertaking all facets of project management including: services consultants and sub trade coordination, local government submissions and possess state-of-the-art in-house manufacturing facilities to undertake all aspects of joinery production, giving us the edge for quality control and fast turnaround production.

Under the direction of our project managers and site supervisors, our onsite fit-out staff have completed some of the most iconic interior fit-out projects both in Australia and internationally. We firmly believe in providing a complete project solution.

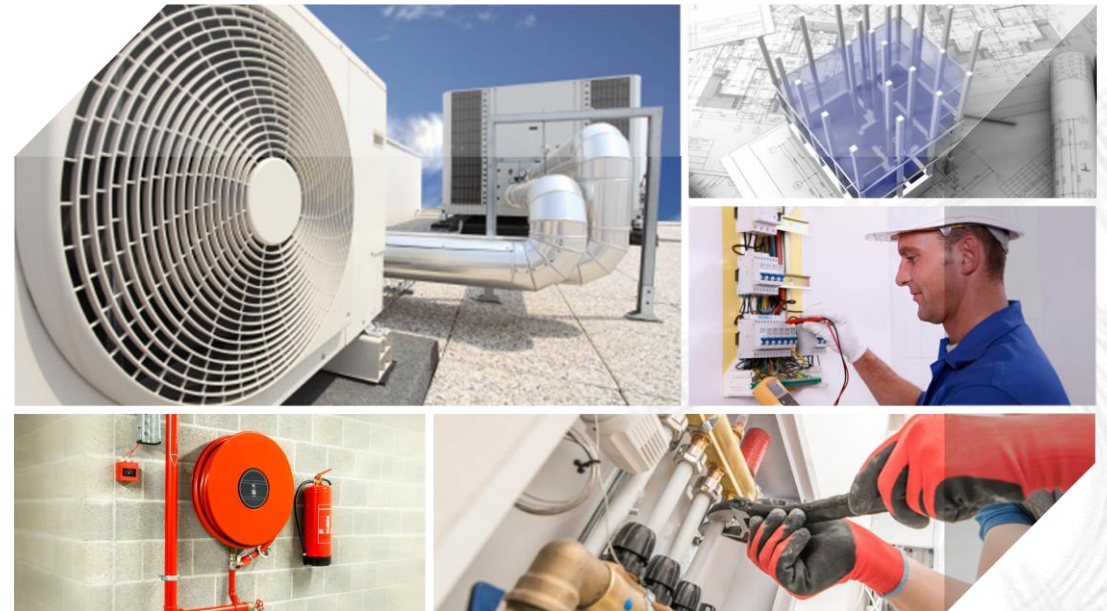
We take your design, concept or idea to the completed stage. Our approach is proactive, completing distinctive fit outs throughout Australia, New Zealand and Asia, on time and on budget with minimum fuss... our reputation has earned us recognition with some of the world's best known and iconic brands.

Fitout: Sub-contractor management

We are a quiet achiever in the interior fit out market with our ability to handle the entire interior project as one package. Typically the sub-contract trades PQ would engage and manage for our projects would include:

- Mechanical, electrical and structural engineering consultants
- Electrical contractors, lighting engineers and consultants
- Mechanical and air conditioning contractors
- Data, security and communications contractors
- Fire services contractors and engineers
- Plumbers and drainers

- Transport, customs agents facilitating international import and export
- Demolition contractors
- Plasterers, solid and drywall
- Stone masons and ceramic tile contractors
- Glaziers and façade contractors
- Painters and special finish artisans
- Metal fabricators



Fitouts Featured Project: Piaget - Chadstone



Fitout

|

Joinery

|

Maintenance

Joinery



We manufacture all joinery in our state-of-the-art 1200m2 manufacturing facility. By keeping production in-house we are able to control not only the quality, but also the cost and importantly, the timing.

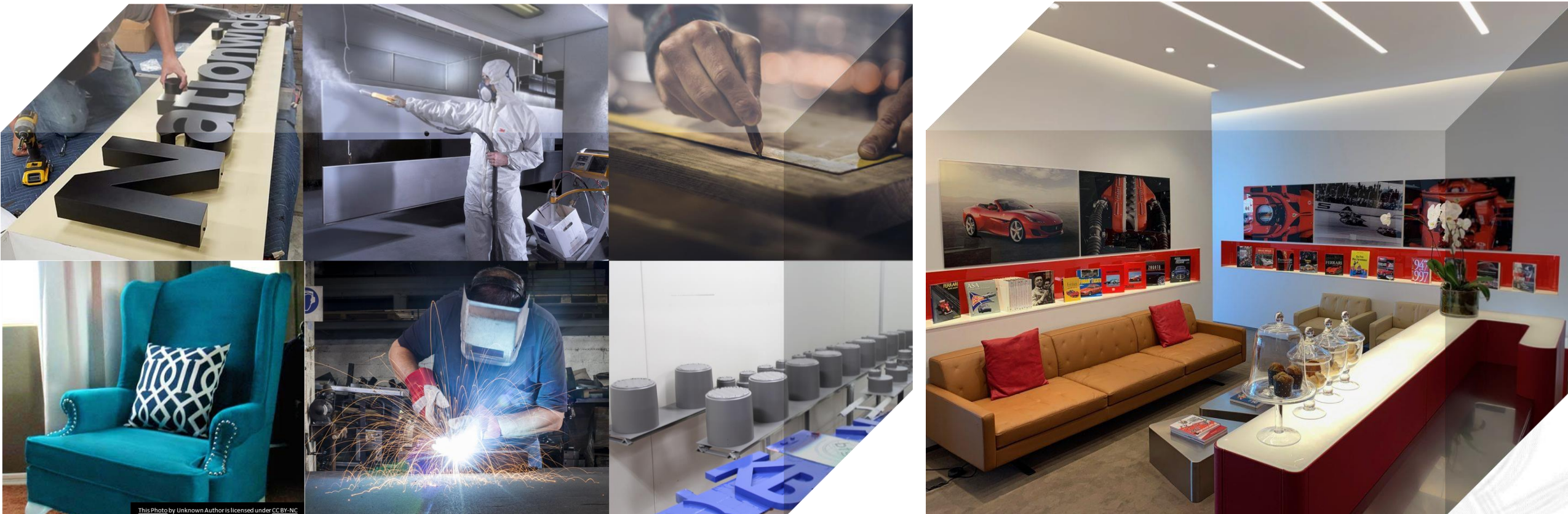
Using the latest computer aided manufacturing equipment, our design and drafting team are able to produce even the most elaborate joinery pieces quickly and easily. The addition of the Anderson 'ANDI' Selexx/3713 series, high speed precision router has greatly improved our productivity, and minimised wastage in the factory. As a result of the investment, our clients now benefit from quicker production turnaround, higher precision, cost reductions and expedited delivery.

Our interior design and drafting team can assist with all joinery designs, floor-plans, colour selections, finishes, fittings, flooring and furniture. We offer a complete service, for retail, commercial and residential fit-outs to suit our clients' individual project requirements and budget.

We work with global and national brands and interior design and architectural firms to prepare cabinetry and shop drawings, ready for construction. Our CAD facilities enable us to interface client design drawings for approval prior to manufacture. We provide clients with floor plans, detailed elevations, sections, lighting, electrical/mechanical plans, 3D renders and prototypes.

Joinery: One stop shop

PQ's Joinery Manufacturing Division engages and manages a wide range of trades through in-house trade specialists and our vast network of subcontractors. The relationships we have built in the business over the past 30 years allows us to accomplish our projects successfully on time and on budget. Examples of our trades include printing, metal fabrication, digital/static/lit signage, bespoke joinery, special display elements, upholstery, painting and powder coating. Communication is one of our greatest strengths, we attend to every requirement and maintain a long-term relationship with our suppliers. We have 'the know how' to prepare and produce the best possible solutions for our clients to meet and exceed expectations. Our extensive knowledge of the materials available in the market allow us to provide advice and to educate our clients to opt for the best to suit their requirements.



Fitout

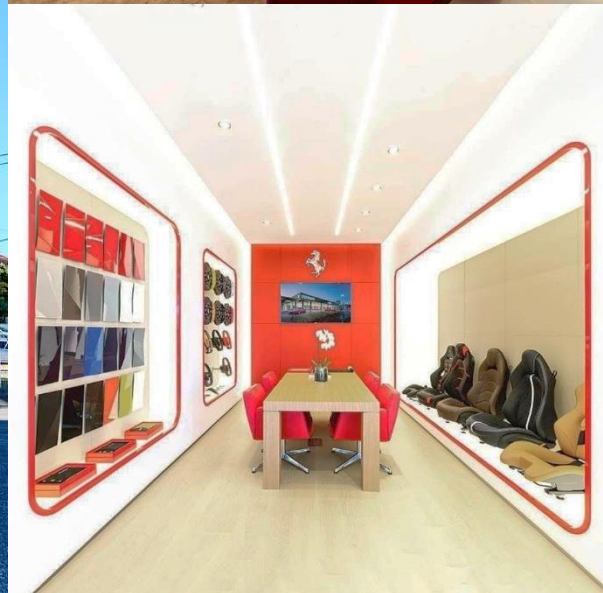
|

Joinery

|

Maintenance

Joinery featured project – Ferrari, Gold Coast



Fitout

|

Joinery

|

Maintenance

Maintenance



We have a dedicated contact line to ensure your maintenance needs are acknowledged and actioned as soon as practical. With a vast network of trades and specialist technicians at our disposal your premises will be maintained to the highest standard.

Servicing all aspects of commercial, retail and building premises and we offer a range of services including:

- Scheduled preventative maintenance
- Facilities maintenance
- On-call corrective maintenance
- Emergency corrective maintenance
- Insurance repairs
- Commercial refits, upgrades-refurbishment
- Scheduled premise inspections

We offer preventative maintenance plans (PMP) to our client to help them save time and money. PMP ensures minimum disruption to the client's business, reduce the costs associated with emergency repairs and allows to always present client's premises at their best.

Each site is unique: the combination of materials and finishes each requiring specialist care. We tailor site specific PMPs to ensure our client's commercial investment is maintained to the highest possible level.

Maintenance: Scheduled Preventative Maintenance Plan

SCHEDULED MAINTENANCE	RECOMMENDED SERVICE PERIOD				
	MONTHLY	QUARTERLY	HALF YEARLY	ANNUALLY	BIANNUALLY
Interior painting				✓	
External façade cleaning and maintenance				✓	
Awning cleaning				✓	
Common area inspections	✓				
Safety Audit	✓				
Restroom/customer amenity maintenance		✓			
Signage and light boxes			✓		
CCTV and Alarm review			✓		
Chandelier cleaning			✓		
Furniture dry cleaning			✓		
Tiles - honed and sealed					✓
Wooden floors - cleaned and sealed				✓	
Stairs - tactile and grip tape secured		✓			
Metal finishes - polished			✓		
Leather finishes - nourished			✓		
Electrical - lights and drivers		✓			
Door hinges and locks - inspected, lubricated	✓				
Drawer runners - tightened and/or replaced	✓				
Roller doors - inspected and lubricated	✓				
Door mats			✓		
Showcase glass - polishing and/or replacement			✓		
Fabric panel refreshing				✓	
Locks - manual and electronic			✓		
Security film remove and replace				✓	
ESSENTIAL SERVICES	RECOMMENDED FOR THE HEALTH AND SAFETY OF YOUR TEAM AND CLIENTS				
Airconditioning		✓			
Electrical test and tag				✓	
Zip tap filter change and sanitize		✓			
Fire safety equipment		✓			



Awning pressure cleaning



Lock & hinge check, clean, lubricate



Chandelier cleaning



AC duct deep cleaning



Steamed carpet cleaning



Metal polishing



Marble revitalization



Roller shutter inspection

Recent Projects



Project: Tiffany & Co.
Location: Raine Square, Perth, WA, Australia
Indicative Contract Sum: Confidential
Type of Building Constructed: Luxury retail store interior fitout and façade
Trades of Works Responsible: GC project
Duration of Contract: 20 weeks
Completed: February 2020



Project: Celine
Location: Collins Street, Melbourne, VIC, Australia
Indicative Contract Sum: Confidential
Type of Building Constructed: Luxury retail store interior fitout and façade
Trades of Works Responsible: GC project
Completed: September 2019



Project: Louis Vuitton
Location: Raine Square, Perth, WA, Australia
Indicative Contract Sum: Confidential
Type of Building Constructed: Luxury retail store interior fitout and façade
Trades of Works Responsible: GC project
Duration of Contract: 22 weeks
Completed: August 2019



Project: Chanel
Location: Queens Plaza, Brisbane, QLD, Australia
Indicative Contract Sum: Confidential
Type of Building Constructed: Luxury retail store interior fitout and façade
Trades of Works Responsible: GC project
Duration of Contract: 11 weeks
Completed: May 2020



Project: Bottega Veneta
Location: Westfield, Sydney, NSW, Australia
Indicative Contract Sum: Confidential
Type of Building Constructed: Luxury retail store interior fitout and façade
Trades of Works Responsible: GC project
Duration of Contract: 14 weeks
Completed: October 2019



Project: Tiffany & Co.
Location: DFS, Cairns, QLD, Australia
Indicative Contract Sum: Confidential
Type of Building Constructed: Luxury retail store interior fitout and façade
Trades of Works Responsible: GC project
Duration of Contract: 12 weeks
Completed: August 2019

Recent Projects (continued)



Project: Dior
Location: Queens Plaza, Brisbane, QLD, Australia
Indicative Contract Sum: Confidential
Type of Building Constructed: Luxury retail store interior fitout and façade
Trades of Works Responsible: GC project
Duration of Contract: 16 weeks
Completed: November 2018



Project: Omega
Location: Brisbane, QLD, Australia
Indicative Contract Sum: Confidential
Type of Building Constructed: Luxury retail store interior fitout and façade
Trades of Works Responsible: GC project
Duration of Contract: 11 weeks
Completed: October 2018



Project: Camilla
Location: Queens Plaza, Brisbane, QLD, Australia
Indicative Contract Sum: Confidential
Type of Building Constructed: Luxury retail store interior fitout and façade
Trades of Works Responsible: GC project
Duration of Contract: 6 weeks
Completed: November 2018



Project: Chanel
Location: David Jones, Sydney, NSW, Australia
Indicative Contract Sum: Confidential
Type of Building Constructed: Luxury retail store interior fitout and façade
Trades of Works Responsible: GC project
Duration of Contract: 4 weeks
Completed: October 2018



Project: Piaget
Location: Chadstone, Melbourne, VIC, Australia
Indicative Contract Sum: Confidential
Type of Building Constructed: Luxury retail store interior fitout and façade
Trades of Works Responsible: GC project
Size: 80m2
Duration of Contract: 16 weeks
Completed: October 2018



Project: Van Cleef & Arpels
Location: Chadstone, Melbourne, VIC, Australia
Indicative Contract Sum: Confidential
Type of Building Constructed: Luxury retail store interior fitout and façade
Trades of Works Responsible: GC project
Size: 203m2
Duration of Contract: 16 weeks
Completed: August 2018

Management System

The success of our projects rests largely on our team’s ability to communicate and monitor targets and critical milestones throughout all stages of a project. Our comprehensive tender evaluation and cost breakdown is carried through to project handover. The Project Estimator presents a detailed information pack for the project to the appointed Project Manager and the factory Production Manager. The handover process involves detailed budget cost discussions, subcontractor appointment, purchase orders, WHS requirements and a detailed work schedule interfacing the site related works and the manufacturing facility production items relating to the project.

A project reporting system is in place whereby the appointed Project Manager adheres to a step by step guideline outlining various fixed requirements such as providing detailed site access reports and identifying site conditions prior to any work commencing. Once the project is underway, a simple yet informative report is completed at the end of each week including photographic evidence, references to the work achieved in relation to the work program in addition to a point form summary report of works carried out to date.

With the assistance of the weekly site report, our Project Managers are then able to assess and take any necessary action that may be required in order to ensure the project remains on target. The reports are also forwarded to the client thus ensuring all parties are regularly updated with the fluid conditions on site resulting in complete transparency between the client, site and head office.

As part of the ongoing project monitoring process our team members are constantly aware of the final 5% factor. By identifying any potential defect areas prior to project handover, the team are able to address any issues promptly ensuring minimum disruption to the client after completion.



Workplace Health & Safety Management

At PQ’s commitment to occupational health, safety and the environment is part of the business. In consultation with Safe Assure, our dedicated team of WHS administration staff and onsite safety supervisors have developed a comprehensive WHS management system.

All factory and onsite staff possess relevant industry safety induction cards and are involved with the preparation and ongoing assessment of the WHS management system. Safety of our employees and subcontractors on each site is further monitored by the site safety supervisor by way of toolbox talks each morning, sign in registers and ongoing risk assessments of individual tasks.



Corporate Environmental Responsibility

In line with our commitment to limiting the impact that our industry has on the environment, we have put in place a series of policies and practices to assist in containing the effect that our industry may have. We believe that we all have a responsibility to contribute to the world we live in to make it a better place and we encourage our staff to be aware of the effects that the nature of our work may have on the environment and to do everything we can to contain the impact.



Water Consumption Reduction

The roof area of approximately 1000m² harvests water that is stored in a 3000 liter storage tank that is used for washing cars, general cleaning and garden watering. All toilets are fitted with up to date water efficient cisterns.

Solar Power Generation and Factory Lighting

The factory roof area accommodates a 40Kw solar collection system that significantly reduces quarterly utility billing, often exceeding our consumption requirements. Factory lighting consists of super high-efficiency, high output lights replacing high-energy consumption work lights with a measurable 75% reduction in power consumption.

Waste Reduction and Management

The company has moved to a paperless management environment as much as is practical given the high dependence on architectural and design plans that characterise PQ's business operations. We operate a high-volume CNC computer managed router, replacing several smaller inefficient machines. This has resulted in lower electricity costs, increased board cutting capacity and significantly lower board off-cut waste (with around 10% saving on wastage). Automatic turnoff to standby mode of electrical equipment where down time exceeds 10 minutes. Dust as a by-product of cutting panels is harnessed via an extraction system and bagged for disposal. All by-product of production and other waste is stored in two large metal collection bins that are collected twice weekly by a professional waste management company. All waste that can be recycled is done so via the appropriate recycling plants relative to the product.

Vehicles

All company vehicles are selected on the basis of fuel efficiency, safety and ease of operation and are carefully maintained to manufacturer specifications with renewal every five years and 100% of our fleet is turbo-diesel powered.

Reach out to us....



PQ HEAD OFFICE

17 Geary Crescent, Molendinar
QLD, 4214
PO Box 791, Ashmore City, QLD, 4214
T: +61 7 5564 9977
F: +61 7 5564 9944
E: info@projectsqld.com.au

PQ WESTERN AUSTRALIA OFFICE

Unit 11 / 8 Murphy Street, O'Connor,
WA, 6163
M: 0412 757 486
F: +61 7 5564 9944
E: brad@projectsqld.com.au



www.projectsqld.com.au

